



Intercontinental Trust Ltd

## KEEP YOUR DATA SAFE ITL'S DIGITAL TRANSFORMATION JOURNEY

As the world becomes increasingly digital, ITL has recognized the need to keep up with Technology and has embarked on a digital transformation journey to ensure that we remain competitive and innovative in the future while at the same time addressing global data security challenges.

Our digital transformation journey started back in 2016 when we migrated to Microsoft Office 365, a cloud-based email service that provides advanced email capabilities, advanced security features, mobile device management, collaboration and productivity tools. With its scalable and reliable service, Microsoft Office 365 Email Exchange helps ITL stay connected and productive, no matter where we are or what device we are using.

Over the years, providing best-in-class service to our clients has remained ITL's priority.

In our effort to continuously innovate and adapt to emerging technologies, ITL has migrated to Microsoft Azure Cloud infrastructure in 2022. This Cloud Computing platform is a comprehensive set of services that enable organisations to develop, deploy and manage applications and services through a global network of Microsoft-managed data centres.

*"At ITL, our priority is to put the client first and our digital transformation was geared with that aim in mind. Migrating to Microsoft Azure brought our IT infrastructure to a world class level whilst improving the security of clients' data and being able to serve our clients with minimal disruption.*



*We are now in a better position to address security, availability, and scalability challenges in an era where digital transformation has become a major differentiator across increasingly sustainable sectors"* explains **Yan Ng, Executive Director at ITL.**

We are pleased to share with you our newsletter which provides an overview of how this cloud-based state-of-the-art technology will help improve our cyber-security, efficiency, resiliency, flexibility, and scalability.

### 01. Security & Compliance

Security is an important concern for organizations. Microsoft Azure offers a comprehensive security model that includes built-in security features and services, such as network security, identity and access management, and data encryption. Azure also complies with industry-standard security certifications, such as ISO 27001, SOC 1 and 2, HIPAA and GDPR, ensuring that organizations' data and applications are protected.

### 05. Physical Access & Hardware Security

Microsoft Azure has multiple physical access and hardware security measures to ensure the security and integrity of its Cloud infrastructure. These measures include data centre security, access controls, video surveillance, environmental controls, hardware security, and compliance with industry standards and regulations. By implementing these measures, Microsoft Azure ensures that its Cloud services are reliable, secure, and available at all times.

### 02. Disaster recovery

Microsoft Azure Site Recovery is a disaster recovery solution offered by Microsoft to protect critical applications and data in the event of a disaster. It provides automated replication and failover capabilities, allowing organizations to quickly recover from disruptions and minimize downtime.

In the event of a disaster, failover can be initiated with just a few clicks.

### 06. ESG (ITL contribution as a signatory to the UNGC)

Microsoft Azure services are up to 93 percent more energy efficient and up to 98 percent more carbon efficient than traditional enterprise data centres. Across every scenario, and even compared to virtualized, high-end data centres, Microsoft Azure is delivering big gains in energy efficiency and reductions in carbon emissions.

### 03. Modernisation

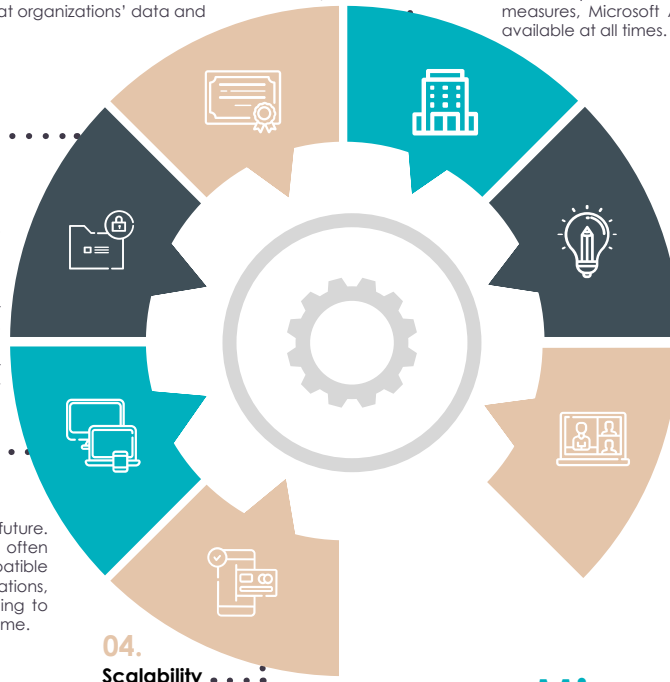
Cloud computing is the future. Cloud-based solutions are often regularly updated to be compatible with new features and integrations, which is much easier than needing to upgrade in-house systems each time.

### 04. Scalability

Microsoft Azure services allow the scaling of apps according to ever-changing demands. This kind of flexibility is not available in on-premise solution. Azure on the other hand can quickly scale to meet business needs at any point in time.

### 07. Work from home

By leveraging Microsoft Azure, we can support our work-from-home initiatives with a secure, scalable and cost-effective solution enabling remote team to work together and stay productive. Employees can access their work resources from anywhere, making it easy and secure to work from home and on the go.



## Microsoft Azure Cloud – ITL Infrastructure

Should you have any queries on ITL's IT infrastructure or you wish to have a chat on any concern regarding the above, please send us an email on [info@intercontinentaltrust.com](mailto:info@intercontinentaltrust.com) or liaise with your usual contact person at ITL.

For any additional information please contact us.

#### Mauritius Office

Email: [mauritius@intercontinentaltrust.com](mailto:mauritius@intercontinentaltrust.com)

Website: [www.intercontinentaltrust.com](http://www.intercontinentaltrust.com)

#### Seychelles Office

Email: [seychelles@intercontinentaltrust.sc](mailto:seychelles@intercontinentaltrust.sc)

#### South Africa Office

Email: [sa@intercontinentaltrust.com](mailto:sa@intercontinentaltrust.com)

#### Singapore Office

Email: [singapore@intercontinentaltrust.com.sg](mailto:singapore@intercontinentaltrust.com.sg)



**Proud Supporter of  
THE GLOBAL GOALS  
For Sustainable Development**



**ISAE 3402**  
COMPLETED TYPE II AUDIT

#### DISCLAIMER

*The content of this newsletter was produced by Intercontinental Trust Limited and may not be copied, reproduced and/or distributed in part and/or in its entirety without the prior written consent of Intercontinental Trust Limited.*

While all reasonable care has been taken in the preparation of this newsletter, Intercontinental Trust Limited accepts no responsibility for any errors it may contain, whether caused by negligence or otherwise, or for any loss, however caused, sustained by any person that relies on it. Readers are advised to consult with appropriate, qualified professional advisors before taking action. Intercontinental Trust Limited will be pleased to discuss any specific issues.

If you do not wish to receive further information from Intercontinental Trust Limited, please send an email to [unews@intercontinentaltrust.com](mailto:unews@intercontinentaltrust.com)